

HB30V

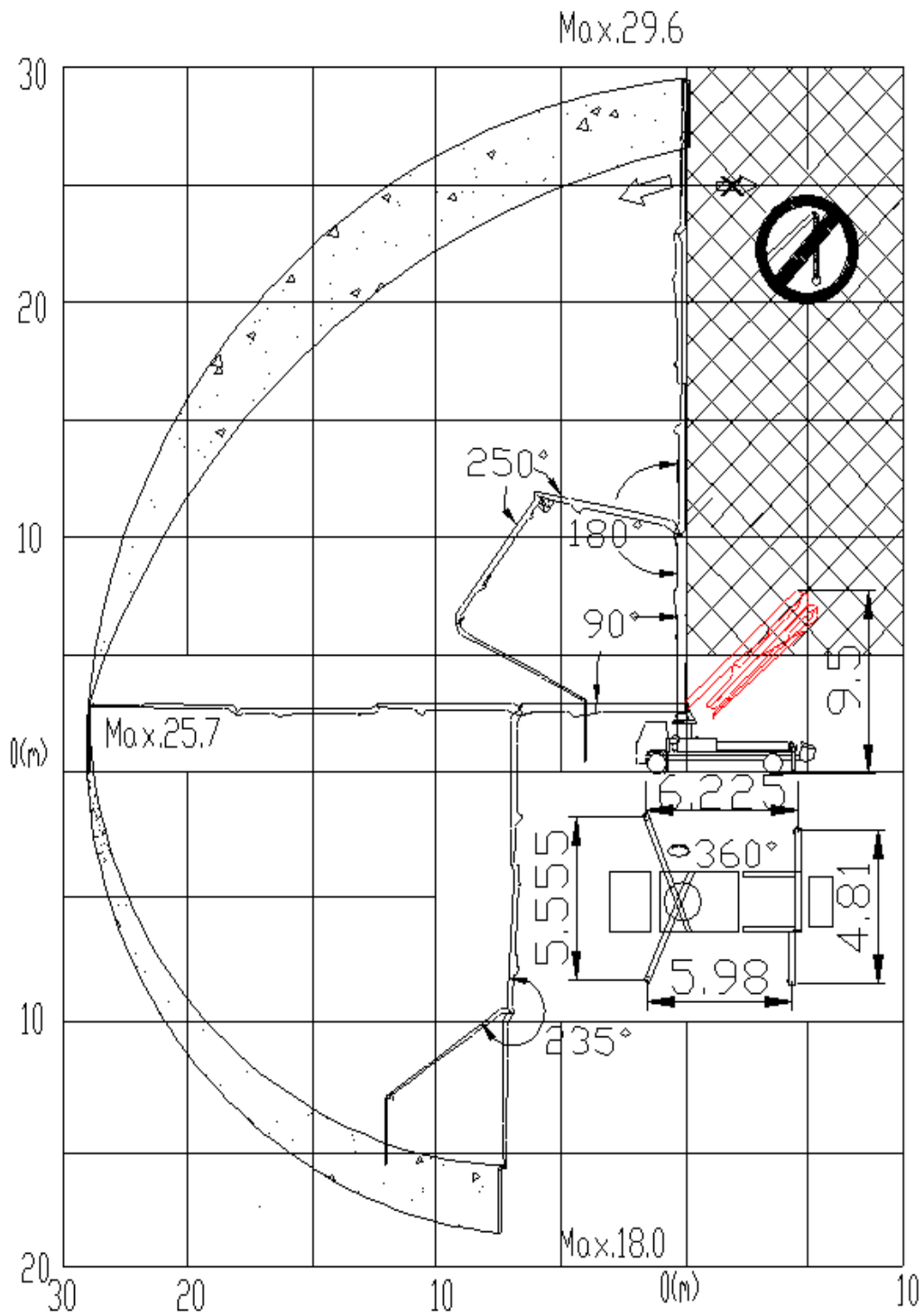
Truck-mounted Concrete Boom Pump



Main Features

- Assembly on standard 2/3 axles chassis
- 4 sections placing boom, "Z" folding system, FEM designed
- Fully hydraulic outrigger controls on both sides of the truck
- Front X-type outriggers and swing-out rear outriggers
- Pumping unit with open hydraulic circuit
- Fully-hydraulic switch over system
- MPS (Micro Pressure Shock) reversing buffering technology
- ROCK valve
- Large diameter slide valve with casting oil passage
- Intelligent electrical control system
- Remote / Manual control method for boom and pumping unit
- Centralized lubrication system for pumping unit
- Piston automatic return technology, easy to replace piston
- Main hydraulic pump overload protection technology
- Engine overload protection technology
- Engine low-speed protection technology
- Anti-tipping safety protection technology
- Lights system

Operation range



Main technical parameters

1. Pumping unit technical data

Item		Parameters
Theoretical output	m ³ /h	100
Delivery pressure	MPa	8
Maximum aggregate diameter	mm	≤40
Concrete cylinder(Diameter × stroke)	mm	Φ230×1600
Filling height	mm	1550
Hopper capacity	L	300
Hydraulic circuit		Open
Transfer tube		Rock Valve

2. Placing boom technical data

Item		Parameters	
Max. vertical reach	m	29.6	
Max. horizontal distance (from center of slewing axis)	m	25.7	
Reach depth	m	18	
Pipeline diameter	mm	125	
Section numbers		5	
1st section unfolding angle		90°	
2nd section unfolding angle		180°	
3rd section unfolding angle		180°	
4th section unfolding angle		230°	
Rotating angle of the placing boom		±270°	
Stabilizer span	Longitudinal span	mm	6225
	Front stabilizer transverse span	mm	5555
	Rear stabilizer transverse span	mm	4810

Technical data and characteristics subject to modifications without notice

XUZHOU XCMG SCHWING MACHINERY CO., LTD

No.29 Taoshan Rd, Xuzhou, Jiangsu, China

Tel: +86 516 83111590

Fax: +86 516 87892035

www.xcmg.com

© by XCMG | All rights reserved